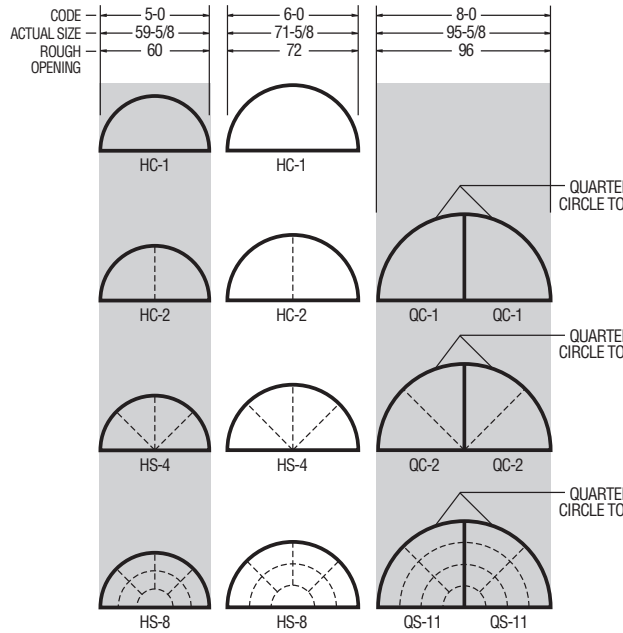


SIZE GUIDE

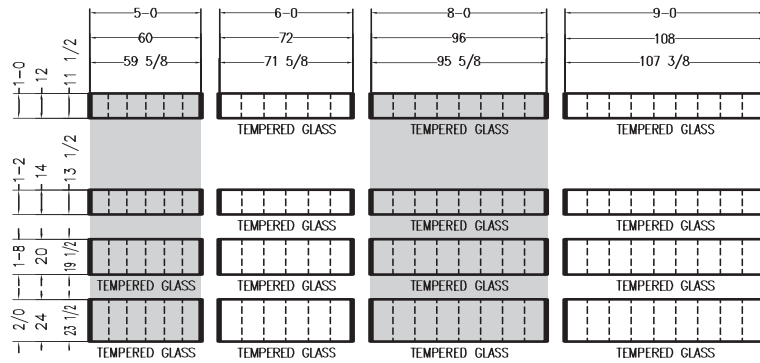


Mi™

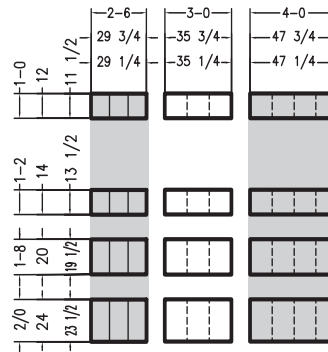
CIRCLE TOP WINDOW SIZES



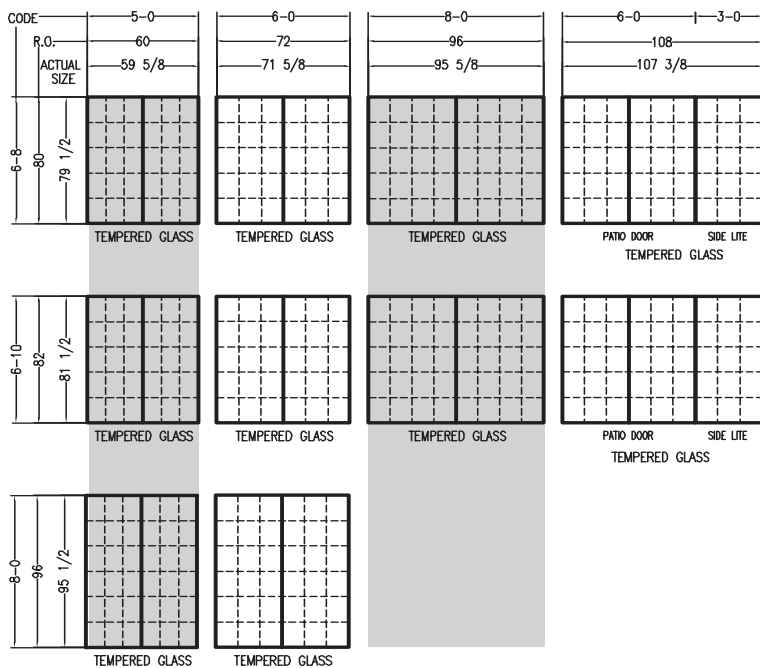
TRANSOM WINDOW SIZES



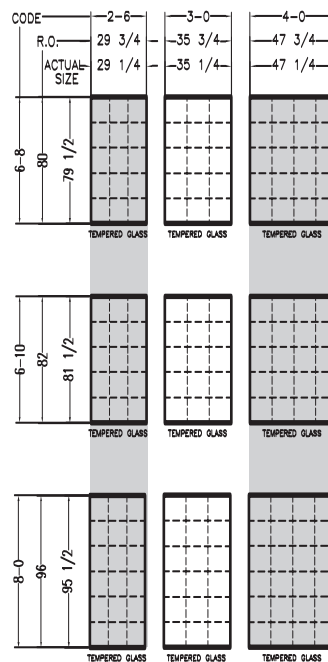
TRANSOM SIDE LITE WINDOW SIZES



PATIO DOOR SIZES



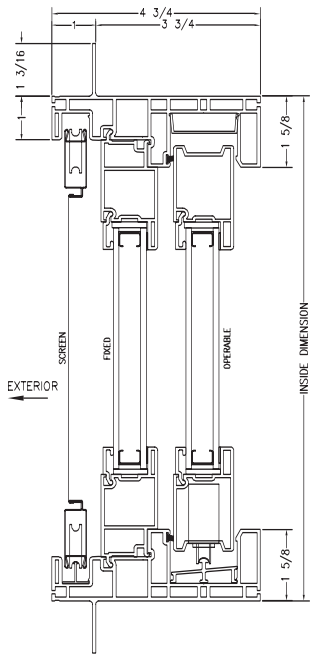
SIDE LITE WINDOW SIZES



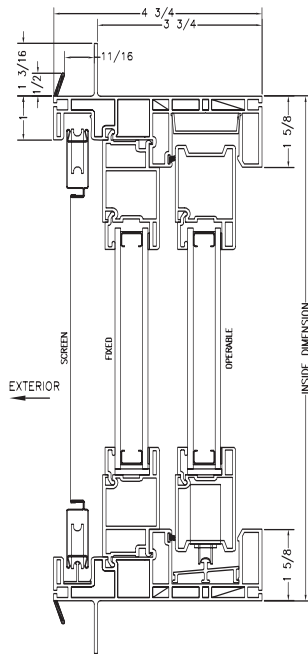
910 VINYL ROLLING PATIO DOOR

SIZES

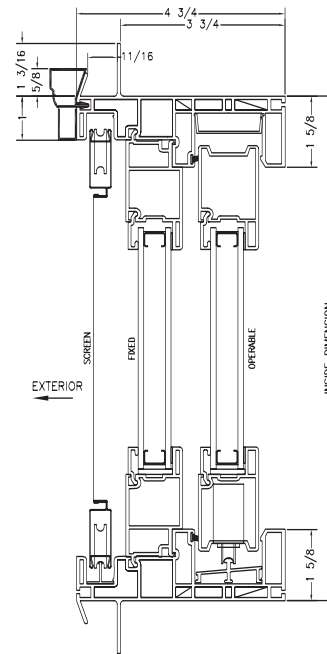
VERTICAL DETAIL



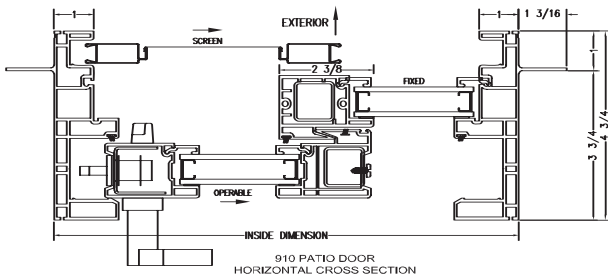
VERTICAL DETAIL WITH J-CHANNEL



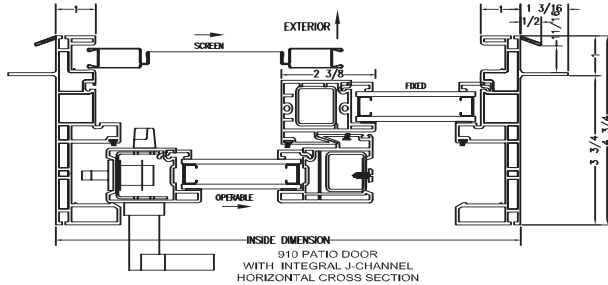
VERTICAL DETAIL WITH BRICKMOULD



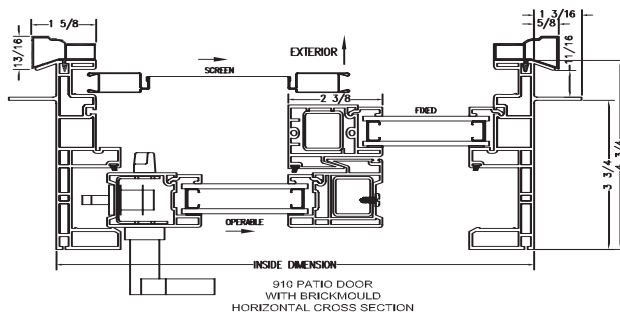
HORIZONTAL DETAIL



HORIZONTAL DETAIL WITH J-CHANNEL

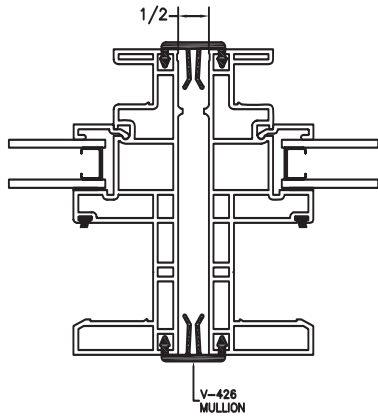


HORIZONTAL DETAIL WITH BRICKMOULD

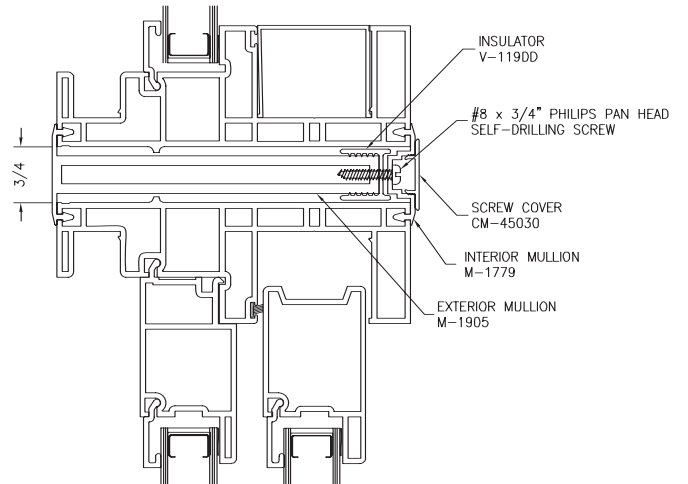


1" Fin Setback is standard.
1 3/8" Fin Setback is optional.

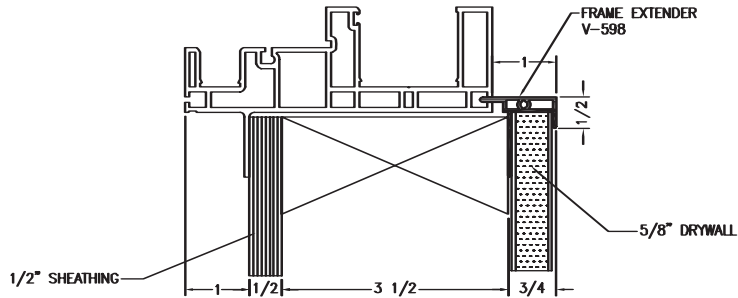
HORIZONTAL MULL DETAIL



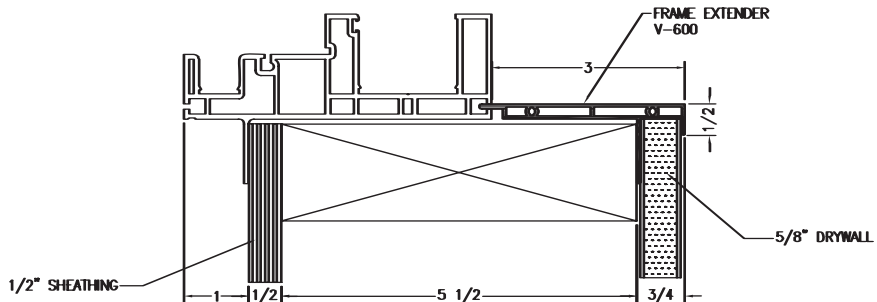
TRANSOM STRUCTURAL MULL DETAIL



FRAME EXTENDERS FOR USE WITH 1/2" OR 5/8" DRYWALL



1/2" SHEATHING, 2x4 STUD



1/2" SHEATHING, 2x6 STUD

NOMINAL UNIT SIZE	ACTUAL FRAME SIZE	CLEAR OPENING Width x Height Panel Slid	VISIBLE LIGHT Total Sq. Ft.	MOVING PANEL SIZE Width x Height	SCREEN SIZE Width x Height	GLASS SIZE Width x Height
2 Panel Doors						
5/0 x 6/8 (ox/xo)	59-5/8 x 79-1/2	24-1/4 x 76-1/4	26.10	30-3/4 x 77-1/4	31 x 77-13/16	26-15/16 x 73-7/16
5/0 x 6/10 (ox/xo)	59-5/8 x 81-1/2	24-1/4 x 78-1/4	26.82	30-3/4 x 79-1/4	31 x 79-13/16	26-15/16 x 75-7/16
5/0 x 8/0 (ox/xo)	59-5/8 x 95-1/2	24-1/4 x 92-1/4	31.86	30-3/4 x 93-1/4	31 x 93-13/16	26-15/16 x 89-7/16
6/0 x 6/8 (ox/xo)	71-5/8 x 79-1/2	30-1/4 x 76-1/4	32.13	36-3/4 x 77-1/4	37 x 77-13/16	32-15/16 x 73-7/16
6/0 x 6/10 (ox/xo)	71-5/8 x 81-1/2	30-1/4 x 78-1/4	33.02	36-3/4 x 79-1/4	37 x 79-13/16	32-15/16 x 75-7/16
6/0 x 8/0 (ox/xo)	71-5/8 x 95-1/2	30-1/4 x 92-1/4	39.23	36-3/4 x 93-1/4	37 x 93-13/16	32-15/16 x 89-7/16
8/0 x 6/8 (ox/xo)	95-5/8 x 79-1/2	42-1/4 x 76-1/4	44.20	48-3/4 x 77-1/4	49 x 77-13/16	44-15/16 x 73-7/16
8/0 x 6/10 (ox/xo)	95-5/8 x 81-1/2	42-1/4 x 78-1/4	45.42	48-3/4 x 79-1/4	49 x 79-13/16	44-15/16 x 75-7/16
2 Panel Doors With Standard Side Lite						
9/0 x 6/8 (oxo) (Side Lite included)	107-3/8 x 79-1/2	30-1/4 x 76-1/4	48.20	36-3/4 x 77-1/4	37 x 77-13/16	32-15/16 x 73-7/16
9/0 x 6/10 (oxo) (Side Lite included)	107-3/8 x 81-1/2	30-1/4 x 78-1/4	49.53	36-3/4 x 79-1/4	37 x 79-13/16	32-15/16 x 75-7/16
910 Side Lite Units						
2/6 x 6/8	29-1/4 x 79-1/2	N/A	15.93	N/A	N/A	26-15/16 x 73-7/16
2/6 x 6/10	29-1/4 x 81-1/2	N/A	16.93	N/A	N/A	26-15/16 x 75-7/16
2/6 x 8/0	29-1/4 x 95-1/2	N/A	17.93	N/A	N/A	26-15/16 x 89-7/16
3/0 x 6/8	35-1/4 x 79-1/2	N/A	16.07	N/A	N/A	32-15/16 x 73-7/16
3/0 x 6/10	35-1/4 x 81-1/2	N/A	17.07	N/A	N/A	32-15/16 x 75-7/16
3/0 x 8/0	35-1/4 x 95-1/2	N/A	18.07	N/A	N/A	32-15/16 x 89-7/16
4/0 x 6/8	47-1/4 x 79-1/2	N/A	22.10	N/A	N/A	44-15/16 x 73-7/16
4/0 x 6/10	47-1/4 x 81-1/2	N/A	23.10	N/A	N/A	44-15/16 x 75-7/16
4/0 x 8/0	47-1/4 x 95-1/2	N/A	24.10	N/A	N/A	44-15/16 x 89-7/16
910 Transom Units						
*3/0 x 1/0	35-1/4 x 11-1/2	N/A	1.82	N/A	N/A	32-15/16 x 9-3/16
*3/0 x 1/2	35-1/4 x 13-1/2	N/A	2.26	N/A	N/A	32-15/16 x 11-3/16
*3/0 x 1/8	35-1/4 x 19-1/2	N/A	3.59	N/A	N/A	32-15/16 x 17-3/16
*3/0 x 2/0	35-1/4 x 23-1/2	N/A	4.48	N/A	N/A	32-15/16 x 21-3/16
*4/0 x 1/0	47-1/4 x 11-1/2	N/A	2.50	N/A	N/A	44-15/16 x 9-3/16
*4/0 x 1/2	47-1/4 x 13-1/2	N/A	3.11	N/A	N/A	44-15/16 x 11-3/16
*4/0 x 1/8	47-1/4 x 19-1/2	N/A	4.94	N/A	N/A	44-15/16 x 17-3/16
*4/0 x 2/0	47-1/4 x 23-1/2	N/A	6.16	N/A	N/A	44-15/16 x 21-3/16
910 Transom Units						
**5/0 x 1/0	59-5/8 x 11-1/2	N/A	3.20	N/A	N/A	57-5/16 x 9-3/16
**5/0 x 1/2	59-5/8 x 13-1/2	N/A	3.98	N/A	N/A	57-5/16 x 11-3/16
**5/0 x 1/8	59-5/8 x 19-1/2	N/A	6.33	N/A	N/A	57-5/16 x 17-3/16
**5/0 x 2/0	59-5/8 x 23-1/2	N/A	7.89	N/A	N/A	57-5/16 x 21-3/16
**6/0 x 1/0	71-5/8 x 11-1/2	N/A	3.88	N/A	N/A	69-5/16 x 9-3/16
**6/0 x 1/2	71-5/8 x 13-1/2	N/A	4.83	N/A	N/A	69-5/16 x 11-3/16
**6/0 x 1/8	71-5/8 x 19-1/2	N/A	7.68	N/A	N/A	69-5/16 x 17-3/16
**6/0 x 2/0	71-5/8 x 23-1/2	N/A	9.58	N/A	N/A	69-5/16 x 21-3/16
**8/0 x 1/0	95-5/8 x 11-1/2	N/A	5.25	N/A	N/A	93-5/16 x 9-3/16
**8/0 x 1/2	95-5/8 x 13-1/2	N/A	6.53	N/A	N/A	93-5/16 x 11-3/16
**8/0 x 1/8	95-5/8 x 19-1/2	N/A	10.38	N/A	N/A	93-5/16 x 17-3/16
**8/0 x 2/0	95-5/8 x 23-1/2	N/A	12.94	N/A	N/A	93-5/16 x 21-3/16
**9/0 x 1/0	107-3/8 x 11-1/2	N/A	5.96	N/A	N/A	105-5/16 x 9-3/16
**9/0 x 1/2	107-3/8 x 13-1/2	N/A	7.41	N/A	N/A	105-5/16 x 11-3/16
**9/0 x 1/8	107-3/8 x 19-1/2	N/A	11.75	N/A	N/A	105-5/16 x 17-3/16
**9/0 x 2/0	107-3/8 x 23-1/2	N/A	14.64	N/A	N/A	105-5/16 x 21-3/16

*Transoms are sized to match Side Lites.
 **Transoms are sized to match Patio Doors.

Individual products may be subject to a variation in performance.



Some products may require special glazing options to meet certain Energy Star criteria. Contact your sales representative for more information.

Energy Star qualified products use less energy than conventional products. You save money and help save the environment. We are proud to be an Energy Star partner.



miwindows.com



QUALITY CONTROL & TESTING
AAMA CERTIFICATION PROGRAM
 ACCREDITED BY: AMERICAN NATIONAL STANDARDS INSTITUTE
 Validator ALI® CODE: MTL-9

AAMA Certification insures labeled products comply with industry specifications related to windload, air infiltration and water resistance requirements.



NFRC rated products provide you with an industry standard energy efficiency testing and ratings comparison. Meet your demands for energy performance at a glance.